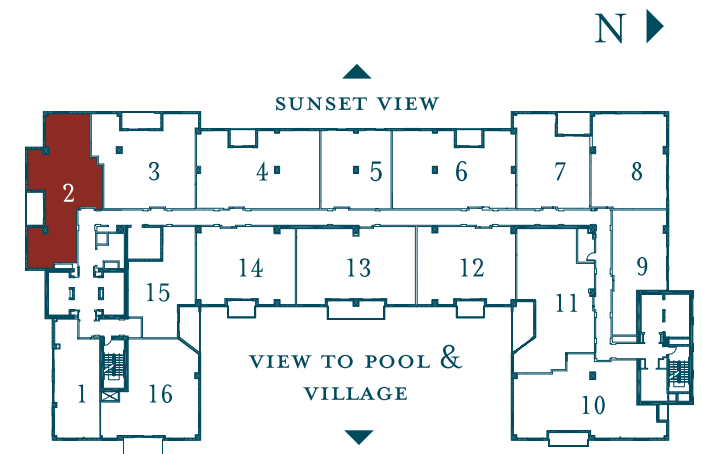


**PORTOFINO**

2 BEDROOM, 2 BATH

INTERIOR:	1,359 SQ. FT.	126.2 M <sup>2</sup>
TERRACE:	613 SQ. FT. (FLOOR 11)	56.9 M <sup>2</sup>
	88 SQ. FT. (FLOOR 12-17, 19-30, 32)	8.1 M <sup>2</sup>
	139 SQ. FT. (FLOOR 18, 31, 33)	12.9 M <sup>2</sup>
<b>TOTAL:</b>	<b>1,972 SQ. FT. (FLOOR 18, 31, 33)</b>	<b>183.2 M<sup>2</sup></b>



Stated dimensions are measured to the exterior boundaries of the exterior walls and the centerline of interior demising wall. These dimensions in fact vary from those that would be determined by using the description and definition of the "Unit" set forth in the declaration (which generally only includes the airspace between the unfurnished interior perimeter walls and excludes interior structural components). All dimensions are approximate, and all floorplans and development plans are subject to change. At closing, the unit conveyed will be based upon the dimension combined in the declaration.

Oral representation cannot be relied upon as correctly stating the representations of the developer. For correct representations, make reference to the written documents by section 718.503, Florida Statutes to be furnished by the developer to a buyer or lessee. Not an offer where prohibited by State statutes. Plans, descriptions, materials and amenities are subject to change. Features and prices are subject to change without notice.

